

Instructions to install USB driver

For Windows XP/Vista/ 72

For Windows 985

For Windows XP/Vista/7

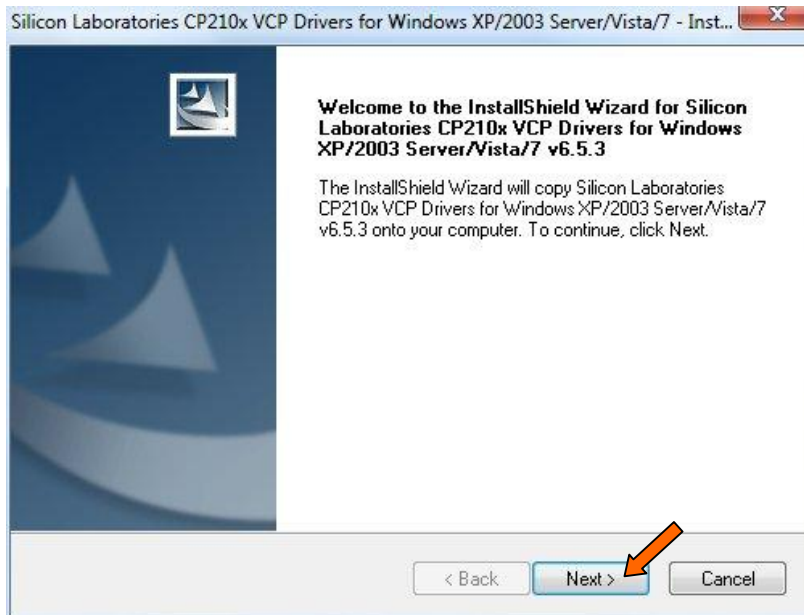
Driver [CP210x_VCP_WinXP_S2K3_Vista_7.exe](#) supports Windows XP, Windows Server 2003, Windows Vista, and Windows 7 operation system. Follow the instructions below to install USB driver.

A. Double click [CP210x_VCP_XP_S2K3_Vista_7.exe](#) on the CD Rom to start the installation.

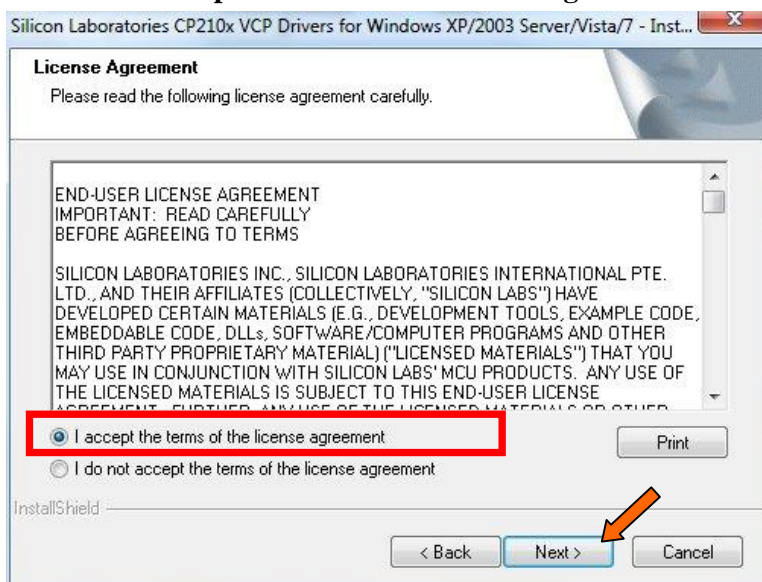


CP210x_VCP_Win_XP_S2K3_Vista_7.exe

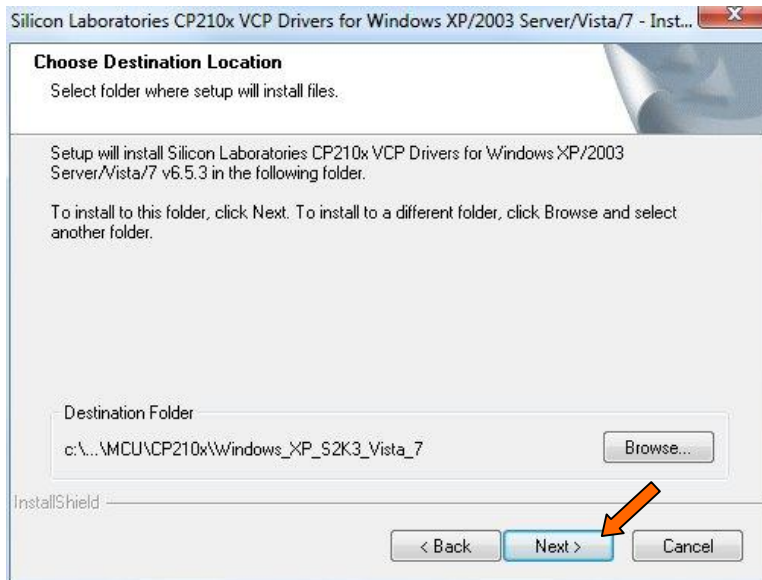
B. In the installation box, click “**Next**” to continue.



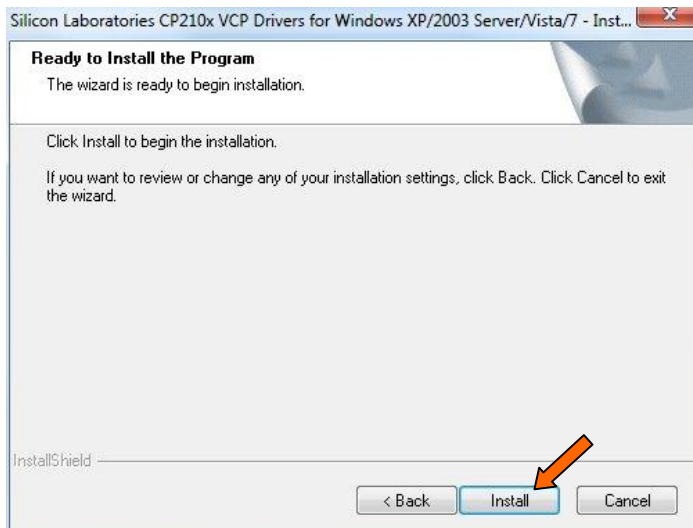
C. Check “**I accept the terms of the license agreement**” and click “**Next**”.



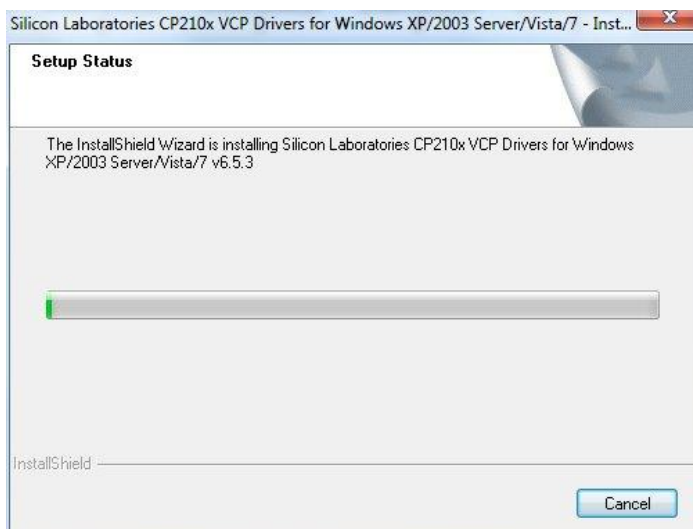
D. Select destination folder for the driver, then click “Next”.



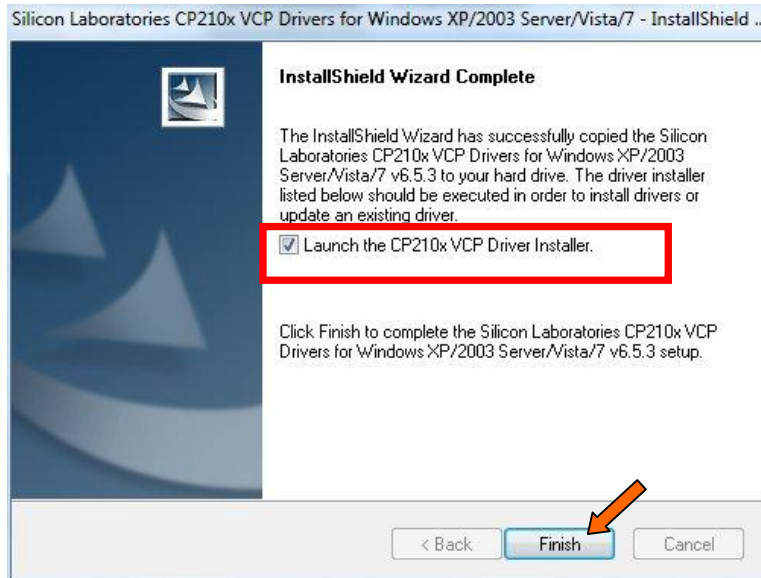
E. Click “Install” to begin the installation.



F. The set up is in process.



G. Check “Launch the CP210x VCP Driver Installer” and click “**Finish**”.



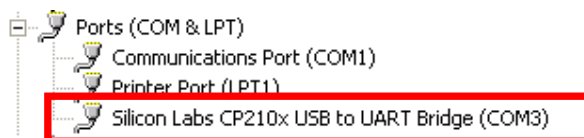
H. In the Driver Installer box, click “**Install**” to continue.



I. The installation is completed after restarting your computer.

J. Connect the USB Cable¹ to your computer and it will detect the USB device and update the driver automatically.

To make sure the driver is updated, right click “**My Computer**” and click “**Content**”. In hardware content, click “**Device Manager**” to check “Silicon Labs CP210x USB to UART Bridge (COMx²)” is listed under Ports (COM & LPT). For example, COM3 as below. The software update is completed and can be used for data transmission.



※ *Note 1:* The USB Cable here refers to VZUSBAZD(2.5 ϕ) or VZUSBAZM/P(3.5 ϕ).

※ *Note 2:* The “x” here could be number 1 to 8 where the USB cable is plugged on.

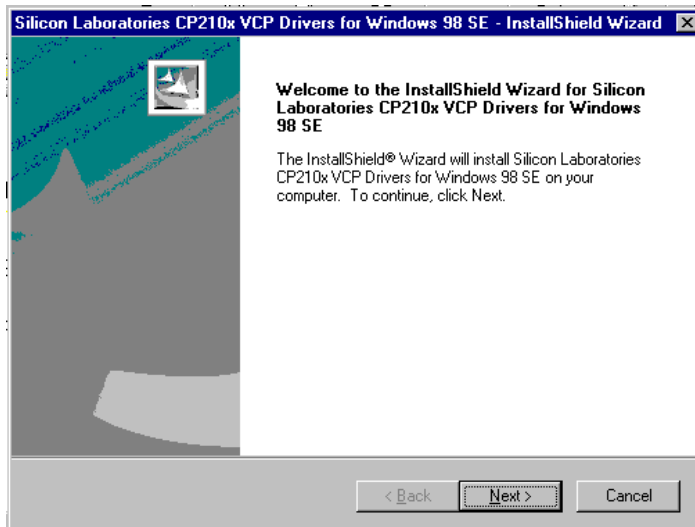
For Windows 98

Driver [CP210x_VCP_Win98SE.exe](#) is for installation in Windows 98 operating system.
Follow the instructions below to install USB driver.

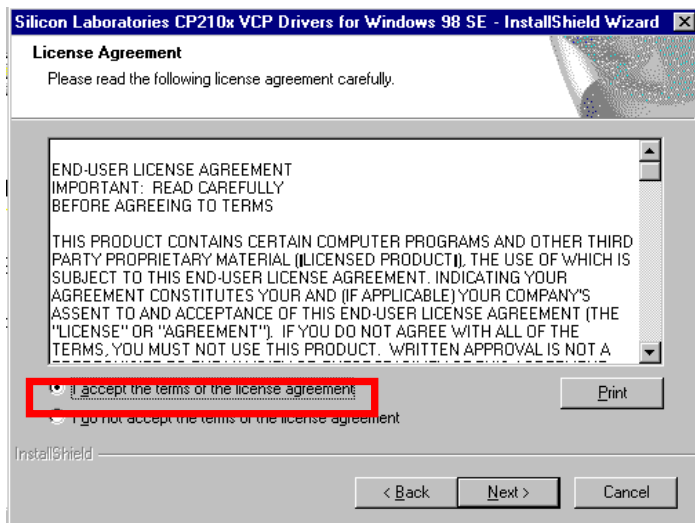
A. Double click [CP210x_VCP_Win98SE.exe](#) on the CD Rom to start the installation.



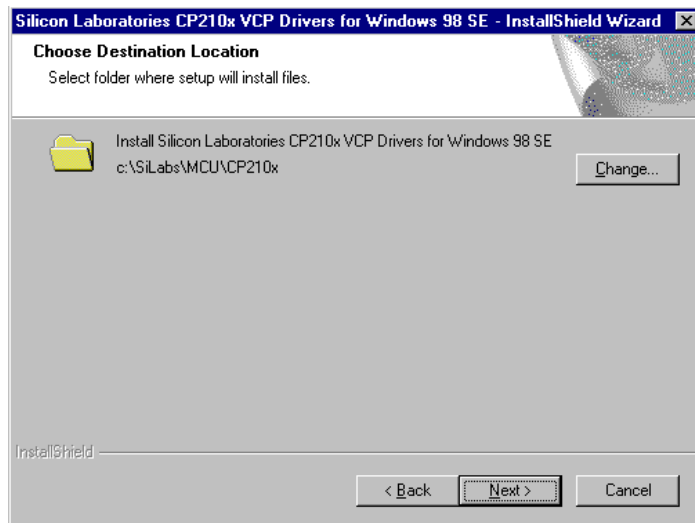
B. In the installation box, click “Next” to continue.



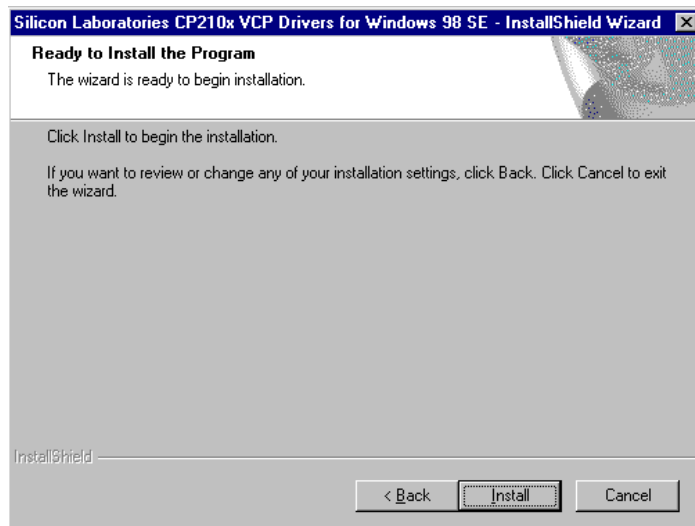
C. Check “I accept the terms of the license agreement” and click “Next”.



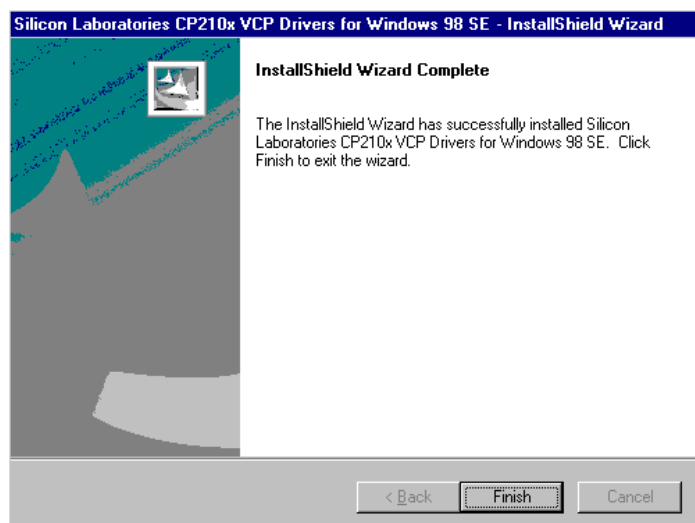
D. Select destination folder (suggest the default location) for the driver, then click “Next”.



E. Click “Install” to begin installation.



F. When the installation completes, click “Finish”.



G. Update the drivers

Connect the USB Cable to your computer and follow the following instructions to update the driver.

1. Search driver for CP2102 USB to UART Bridge Controller. Click “**Next**” to continue.



2. Check “Search for the best driver for your device” and click “**Next**”.



3. Select the search location. You can follow the default location and click “**Next**” to start.



4. Search driver for CP2102 USB Composite Device. Click “Next” to continue.

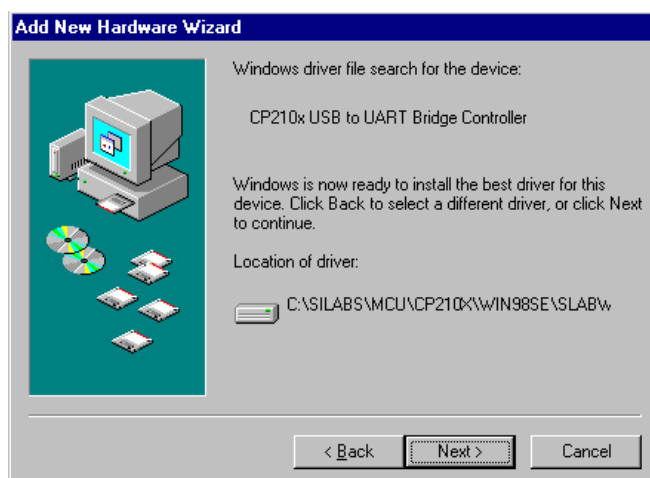


5. Update completed for CP2102 USB Composite Device. Click “Finish”.



6. Repeat update procedure 1, 2, and 3 as above.

7. Search driver for CP2102 USB to UART Bridge Controller. Click “Next” to continue.



8. Update completed for CP210x USB to UART Bridge Controller. Click “Finish”.



9. You can start data transmission when software update is completed.